



BE VOTER READY

EVERY STATE'S ELECTION RULES
ARE DIFFERENT. USE THIS TOOLKIT
TO ACCESS VOTING RESOURCES.

ELECTION DAY IS NOVEMBER 3

Are You Registered to Vote?

Yes

- If you moved recently, your voter's registration needs to be updated. [Find out how you can change your registration.](#)
- If this is your first time voting, [learn all you need to know about voting in your state.](#)

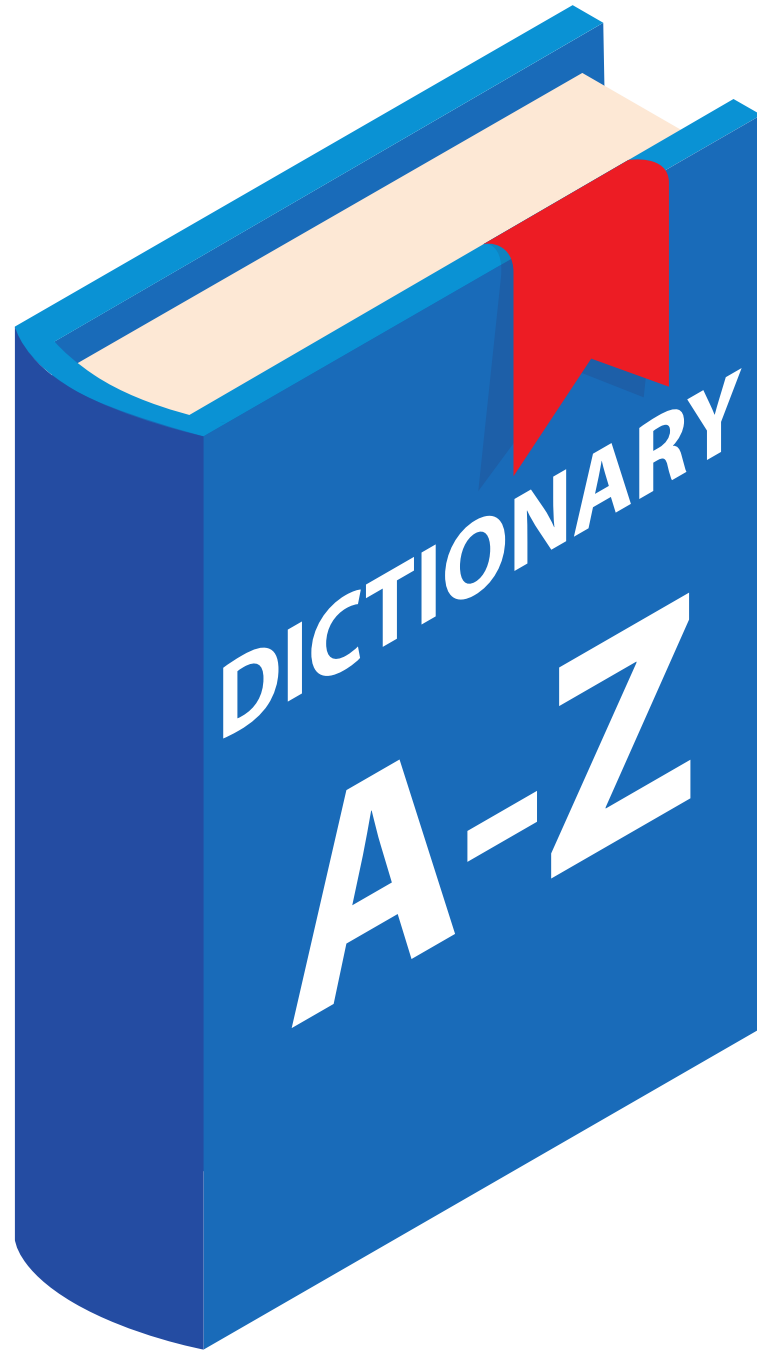
Not Yet

- [Become a registered voter to participate in the 2020 Election.](#)
- If you aren't 18 years old, but will be by November 3, you can still register to vote. [Review the voter registration age requirements.](#)

Maybe

- If you're not sure, [you can check your voter's registration.](#)





Voting and Election Terms

Absentee ballot, ballot initiative, and constituent are a few words and phrases that are helpful to know for the voting process. [Learn more common voting and election terms.](#)

As of June 2019, qualified residents of the following states are allowed to register to vote and cast a ballot on the same day:

CALIFORNIA - COLORADO - CONNECTICUT - DISTRICT OF COLUMBIA - HAWAII - IDAHO - ILLINOIS - INDIANA - MAINE - MARYLAND - MICHIGAN - MINNESOTA - MONTANA - NEVADA - NEW HAMPSHIRE - *NORTH CAROLINA - UTAH - VERMONT - WASHINGTON - WISCONSIN - WYOMING

[LEARN MORE ABOUT SAME DAY VOTER REGISTRATION](#)

*This state permits same day registration only during the early voting period.



#BeVoterReady

VOTER REGISTRATION DEADLINE

THE VOTER REGISTRATION DEADLINE VARIES
BY STATES. MOST DATES FALL BETWEEN 8
AND 30 DAYS BEFORE THE ELECTION.

[FIND OUT YOUR STATE'S DEADLINE](#)



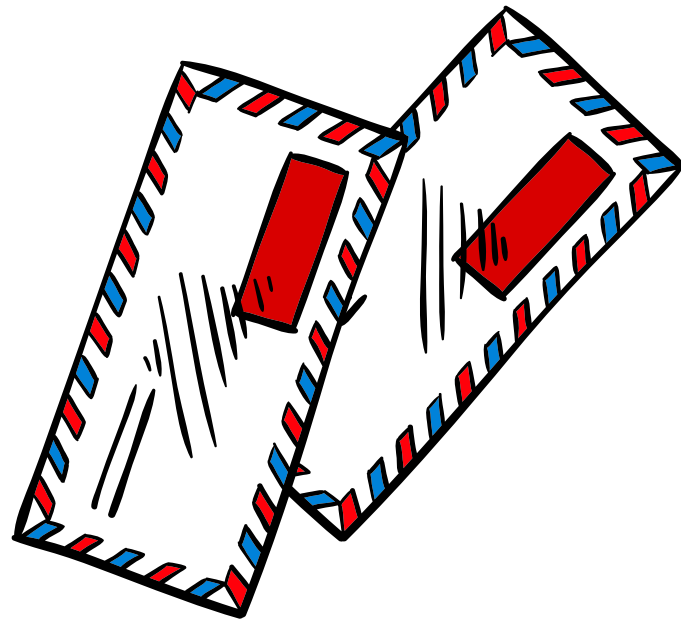
#BeVoterReady



Early Voting (**Highly Encouraged**)

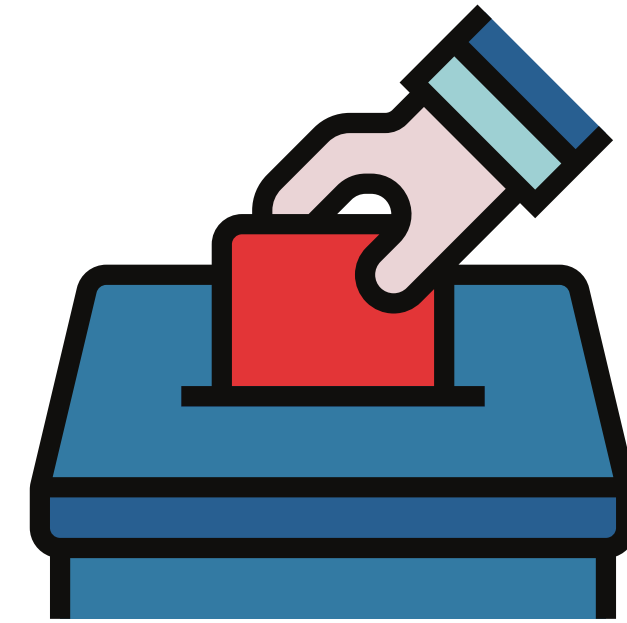
Although Election Day is November 3, you may be able to participate in early voting. Some states allow in-person voting days before Election Day. Other states have in-person absentee voting, which permits voters to drop off their absentee ballot in person. [Learn more about the early voting rules in your state.](#)

Ways to Vote



Absentee Ballot

If your state does not allow in-person absentee voting, you may still be able to request one and cast your vote via mail. [Learn more about the absentee ballot rules and deadlines for your state.](#)



In Person

Due to COVID-19, some states have implemented guidelines for in-person voting. [Locate details about your polling site,](#) for early voting and Election Day. [Review information about your state's COVID-19 voting response.](#)

Election Day

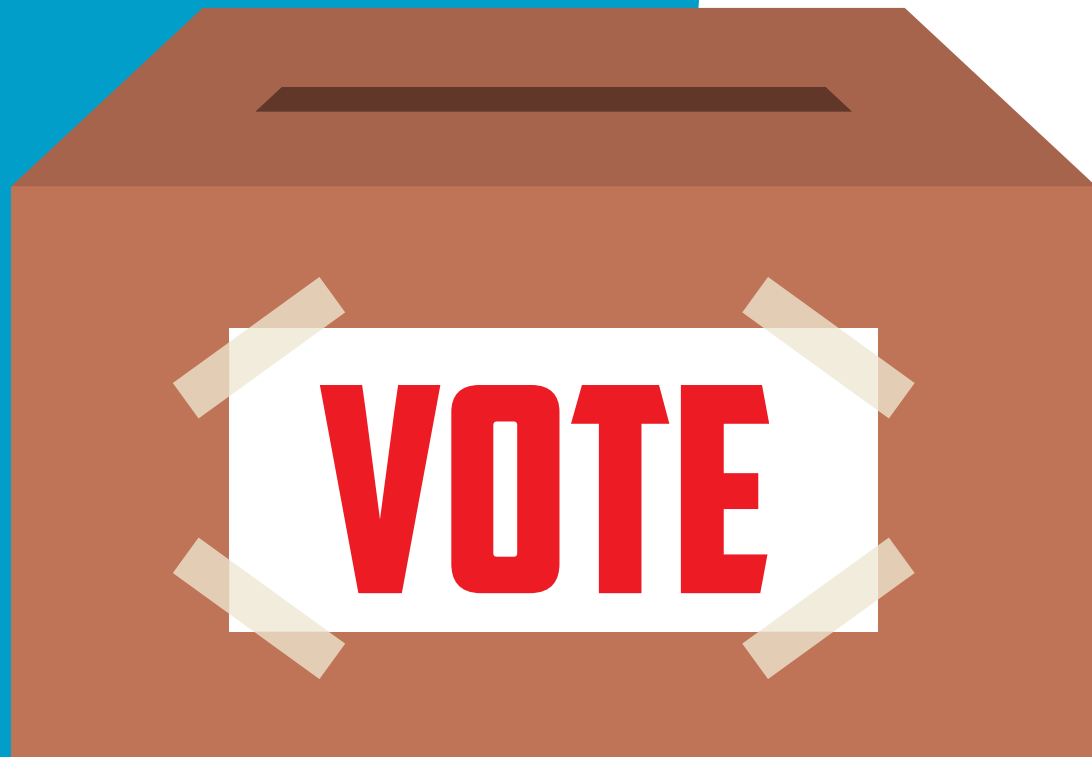
Becoming a registered voter is just a small part of your role in the election.

- Make sure your family and friends are registered to vote. Feel free to share this toolkit with anyone who needs more information.
- On the days leading up to the election, be sure to learn about each candidate's platform. Tune into the presidential debates and read non-biased articles that review the candidate's values to be an informed voter.
- The last step is to show up on election day. Every vote counts! You have a chance to voice your opinion on what you want to see for our future. If your time allows, [become a poll worker](#) to help things run smoothly at the polling site.

Whether you vote via absentee ballot or in person, NAF thanks you in advance for voting in the 2020 election.

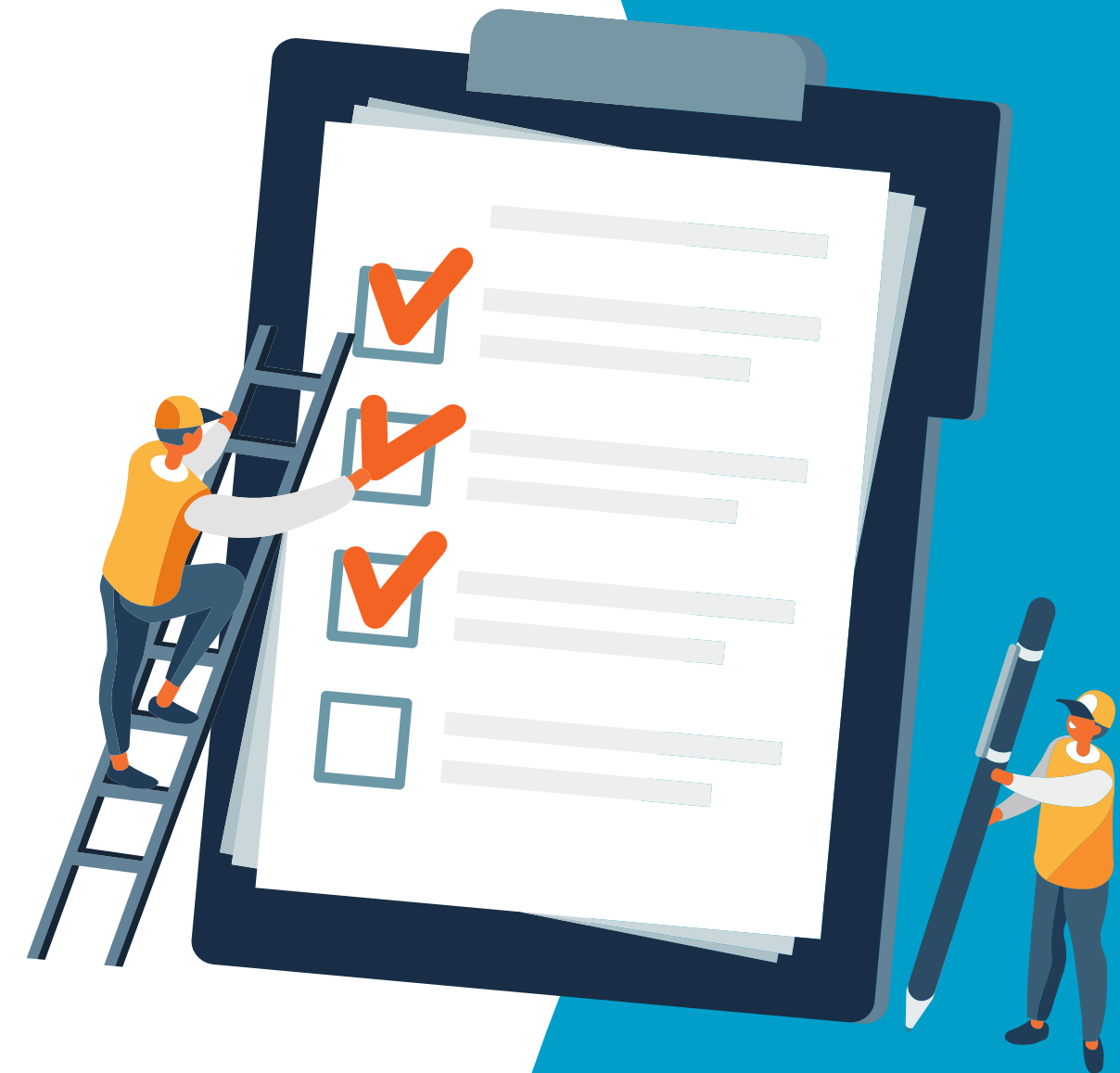


#BeVoterReady



Your Voting Plan

- ☐ I am registered to vote!
- ☐ I signed up for election reminders at vote.org, to stay informed.
- ☐ I am going to vote ____ [method] ____ on ____ [date] ____.
- ☐ If I am voting by mail, I will request an absentee ballot by ____ [date] ____ and turn it in as soon as possible.
- ☐ If I am voting in person, I know where my polling site is and [what identification items I needs to bring with me.](#)



Additional Resources

If you have questions that are not addressed in this toolkit, please utilize the following sites to gather relevant information:

- <https://www.headcount.org/>
- <https://www.nass.org/can-i-vote>
- <https://www.usa.gov/voting>
- <https://www.vote411.org/>
- <https://www.vote.org/>